

NADI OCEANIC CONTROL

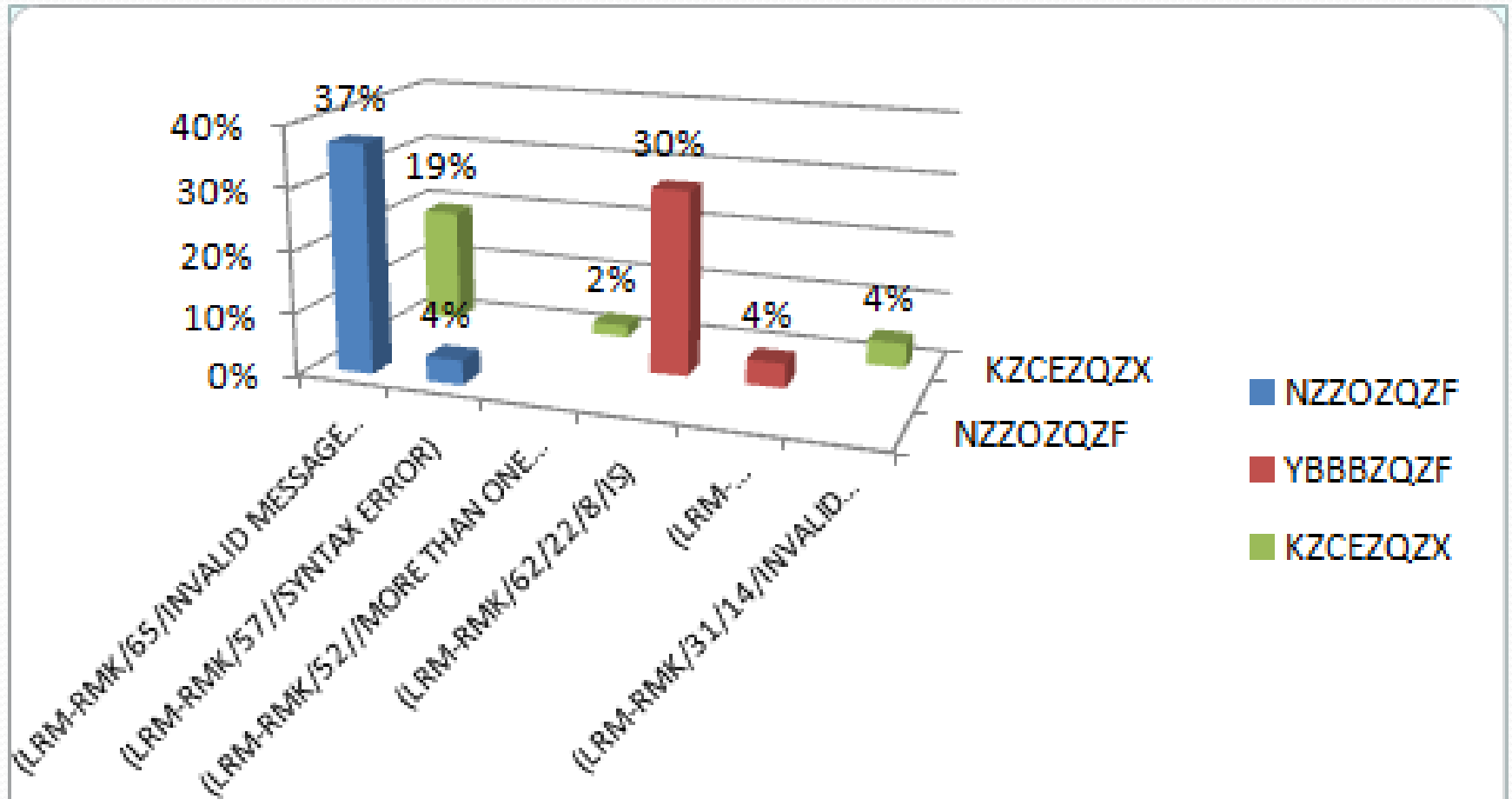


AIRPORTS FIJI
L I M I T E D

Inbound LRM's

12th to 30th December 2014	Origin			Total
Message Type (LRM Recieved)	NZZOZQZF	YBBBZQZF	KZCEZQZX	LRM's
(LRM-RMK/65/INVALID MESSAGE SEQUENCE)	38		20	58
(LRM-RMK/57//SYNTAX ERROR)	4			4
(LRM-RMK/52//MORE THAN ONE FIELD MISSING)			2	2
(LRM-RMK/62/22/8/IS)		31		31
(LRM-RMK/32/14/VESUN/0348F410F450F300A)		4		4
(LRM-RMK/31/14/INVALID SUPPLEMENTARY CROSSING DATA)			4	4
	42	35	26	103

Inbound LRM's



Outbound LRM's

12th to 30th December 2014	Destination			Total
Message Type (LRM Sent)	NZZOZQZF	YBBBZQZF	KZCEZQZX	LRM's
(LRM-RMK/65/INVALID MESSAGE SEQUENCE)	170	27	8	205
(LRM-RMK/6/INVALID ACID)	1	4		5
(LRM-RMK/52//MORE THAN ONE FIELD MISSING)	2			2
(LRM-RMK/34/14/INVALID CROSSING CONDITION)	1			1
(LRM-RMK/26/14,15/INVALID ENROUTE POINT)			12	12
	174	31	20	225

Outbound LRM's

