

# Agenda Item 6

# NZZO Feedback

ISPACG FIT 24  
Honolulu, Hawaii  
6-7 March 2017



# NZZO Feedback - Overview

- Performance:
  - Will be covered in more detail in separate WP.
  - Overall performance observed in monitoring against both RSP180 and RCP240 specifications is acceptable.
  - A small number of PR have been raised against aircraft not meeting RCP240/RSP180
  - Availability affected by a number of outages in 2016.
- HFDL
  - Increasing use of HFDL seen in 2016 and covered in more detail in a separate WP.
  - Concerns over poor performance when used as sole means need to be addressed.
- Iridium
  - While < 1% of traffic observed Performance still poor.
  - More detail in performance brief.
- PBCS monitoring in NZZO in 2016
  - Improved with implementation of our on-line analysis tool.
  - Analysis tool requires considerably less resource to extract performance data.
  - Co-ordination underway to agree how to publish monitoring results for regional use.
  - CRA website being enhanced to permit upload of PBCS monitoring data by region.

# NZZO Feedback

- CRA Website:
  - Website upgrade completed in December 2016
  - Will be covered in more detail in separate IP.
- PBCS Implementation
  - On track for March 2018 implementation.
    - Monitoring framework established - co-ordinating regionally and globally to agree how we publish results.
    - CRA website upgrade to enable storage of monitoring results
    - On-line PBCS analysis tool developed (refer PBCS workshop IP)
    - OCS ATM development work completed (refer PBCS workshop IP)
    - Co-ordinating changes to Regional Supplementary Procedures.
    - Co-ordinating changes to NZ-AIP and AIC.

## NZZO Feedback – Media mix observed (ADS-C) 2016

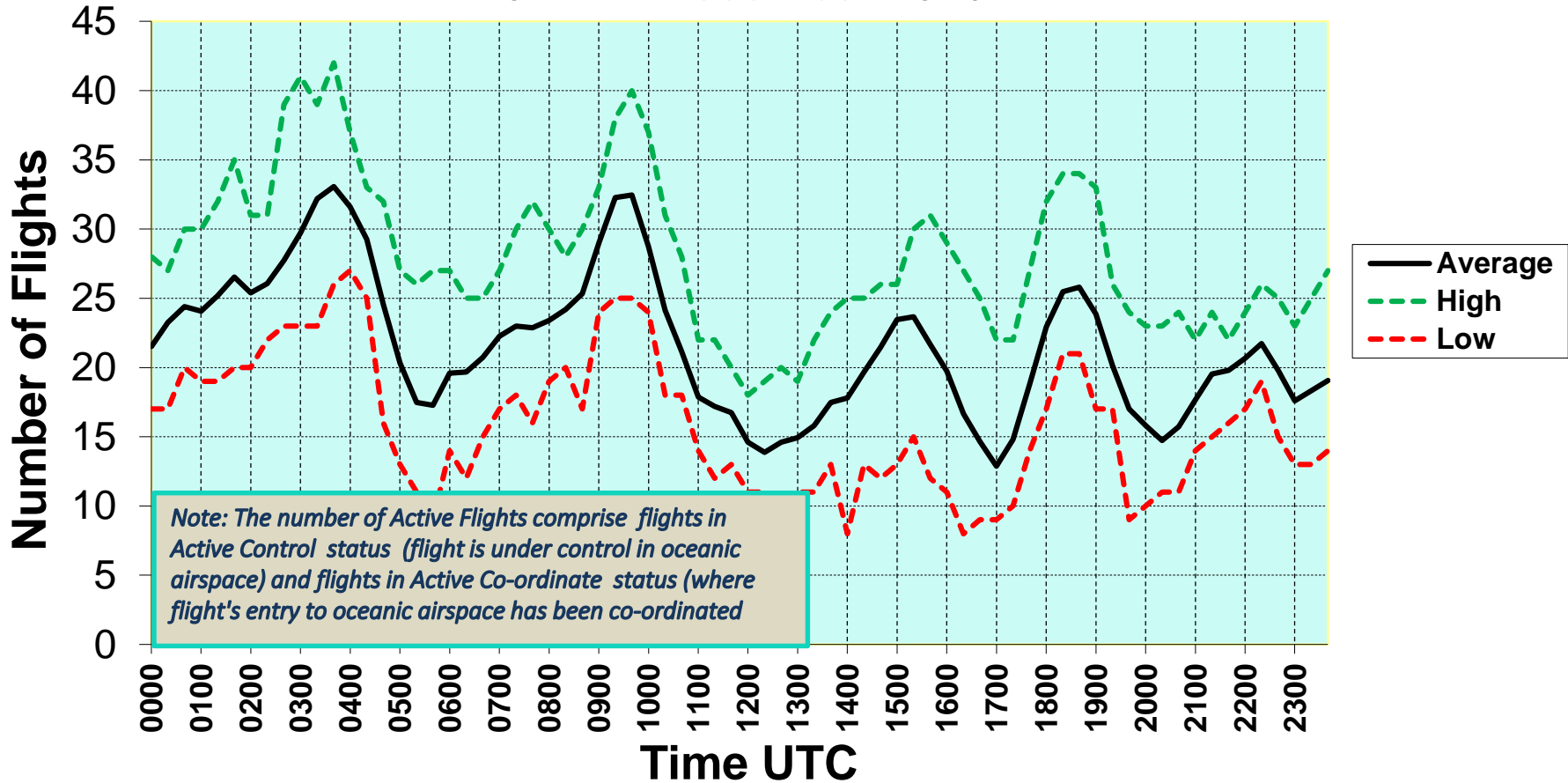
Total Messages: 560969

- SATCOM - 82%
  - Inmarsat I3 – 42%
  - Inmarsat I4- 20%
  - Inmarsat SBB - <1%
  - Iridium- <1%
  - MTSAT-18%
- VHF – 18%
- HFDFL – <1%



# NZZO Feedback – Controller workload (usual operating mode is single sector/single controller in the FIR)

## Auckland Oceanic Active Flights Analysis 8<sup>th</sup>-24<sup>th</sup> December 2016



A photograph of an Air New Zealand Boeing 777-300ER aircraft in flight against a clear blue sky. The aircraft is shown from a low angle, flying towards the left. The tail features the airline's signature silver fern logo. The registration number ZK-DKN is visible on the vertical stabilizer and the rear fuselage. The words "AIR NEW ZEALAND" are partially visible on the front fuselage.

# Thank you

